



**Gobierno
Departamental
Autónomo
Santa Cruz**



P D Z N

**GOBIERNO DEPARTAMENTAL
AUTÓNOMO DE SANTA CRUZ**

**PROYECTO DRENAJE ZONA
NORTE**



CASAS EN PALAFITOS



REFUGIOS COMUNITARIO Y FAMILIAR

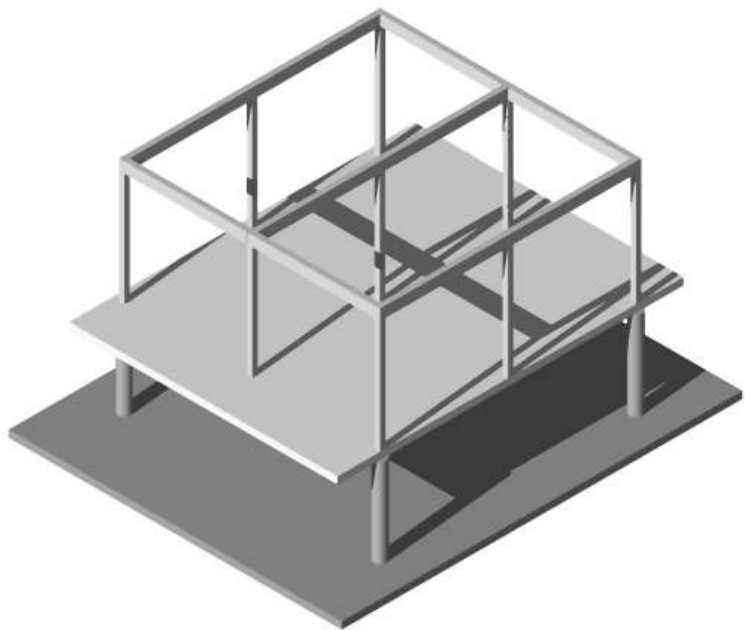




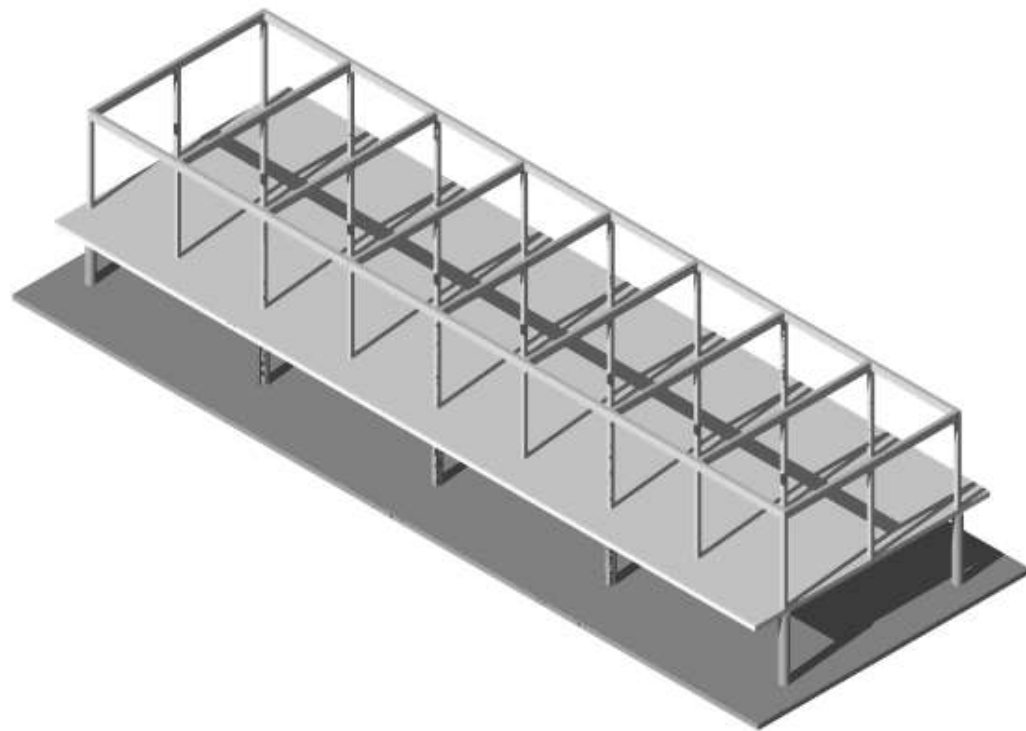
Experiencias previas



Experiencias previas

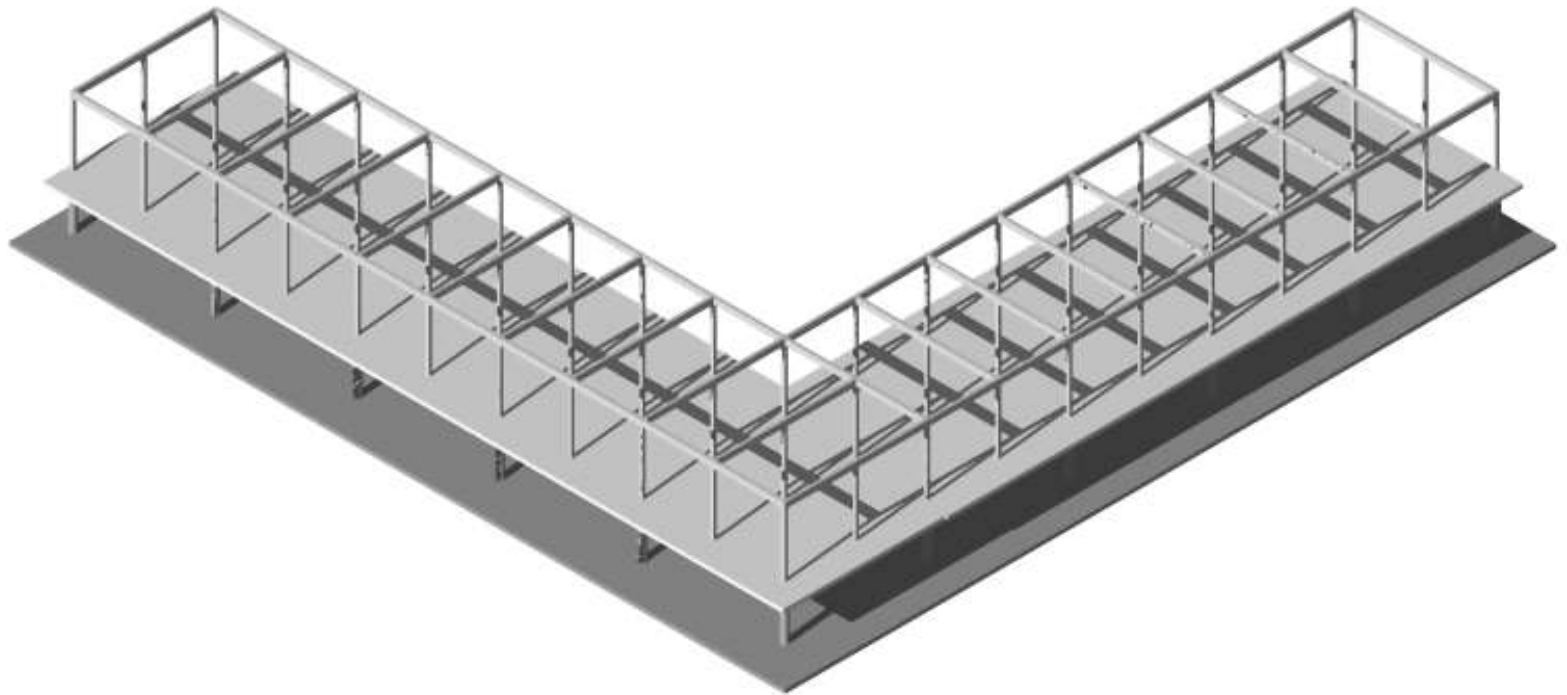


Módulo básico



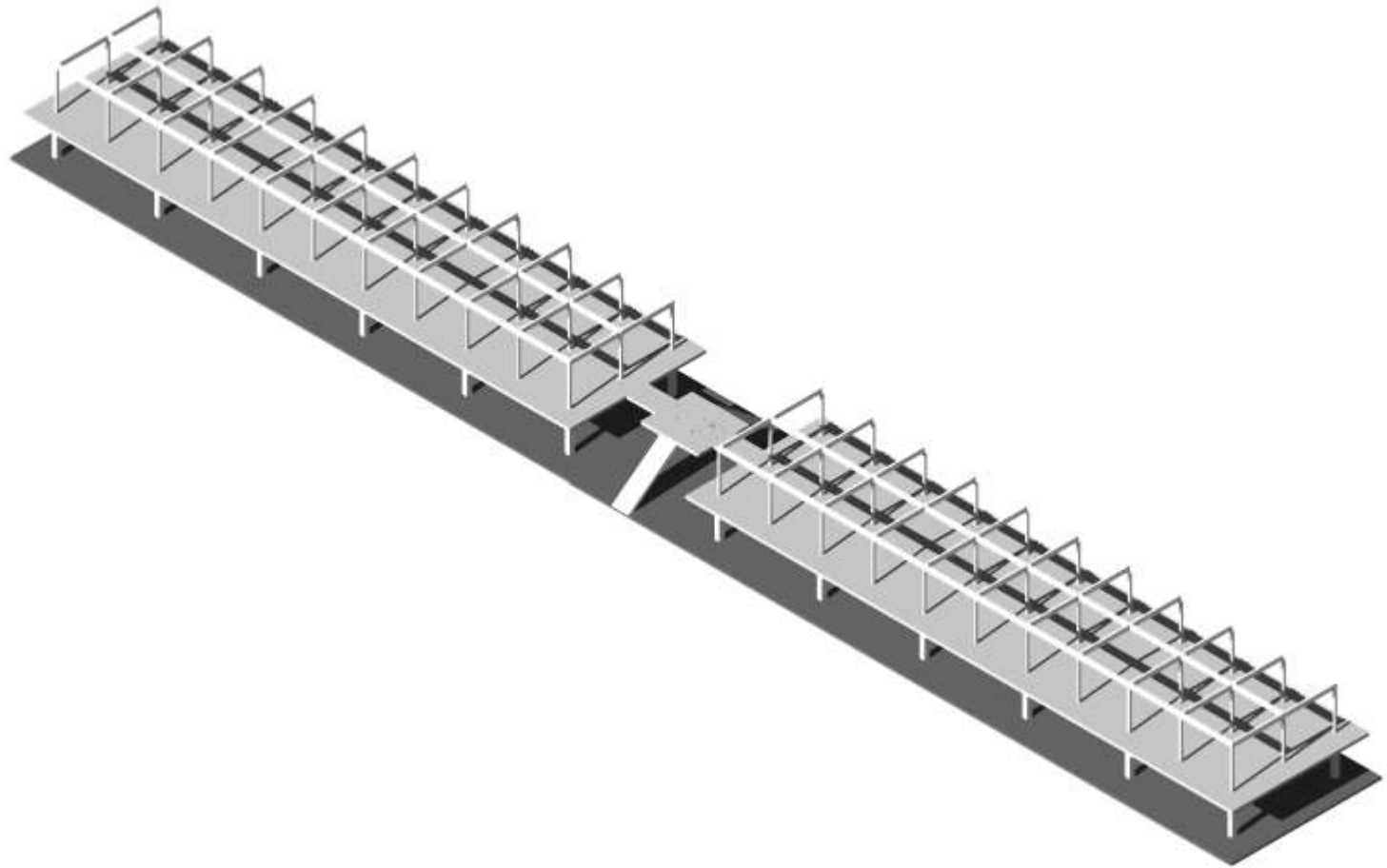
Refugio comunitario Módulo en bloque

PROYECTO REFUGIO COMUNITARIO



Refugio comunitario en dos bloques en esquina ángulo 45o

Plan comunitario

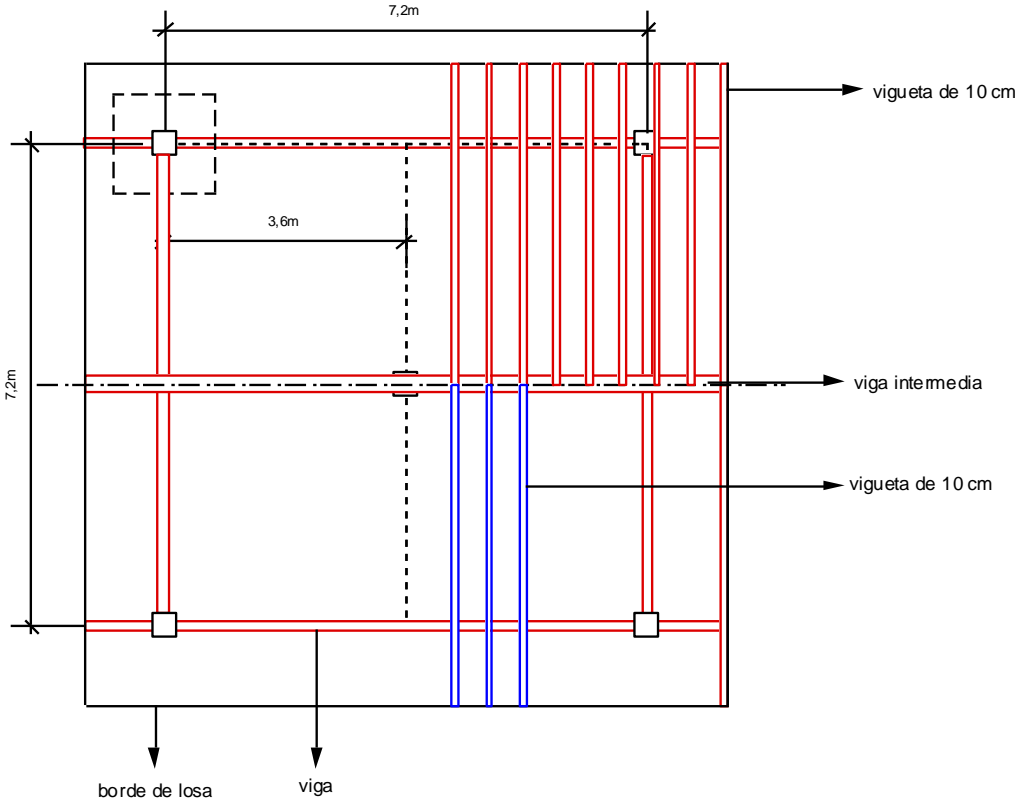
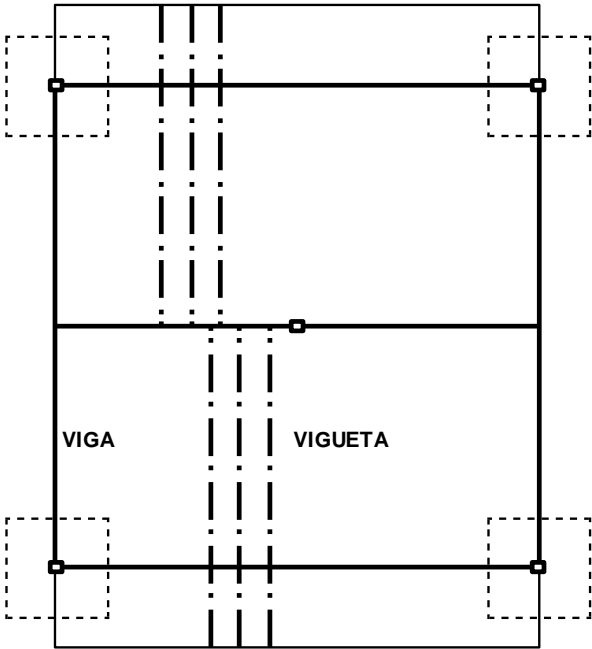


Refugio comunitario en dos bloques sentido longitudinal

Plan comunitario

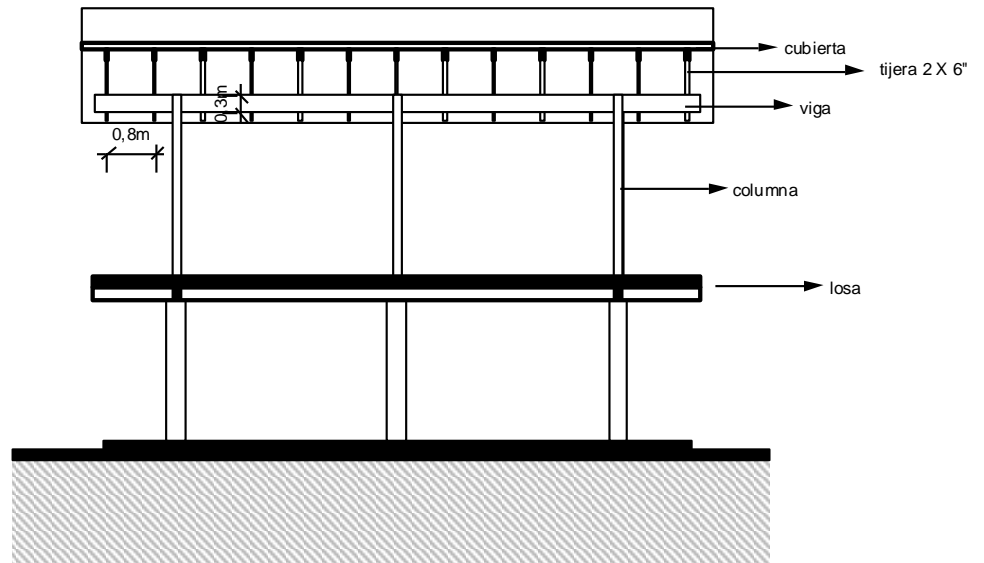
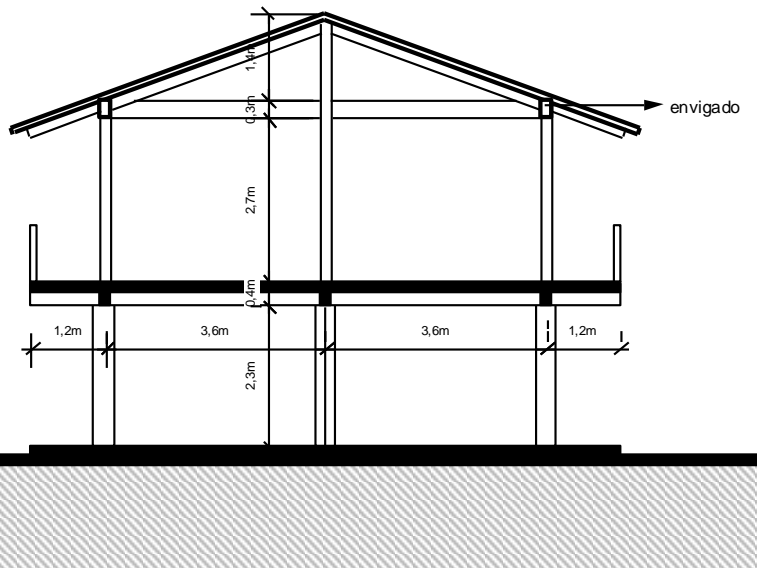
MODULO ESTRUCTURAL BASICO

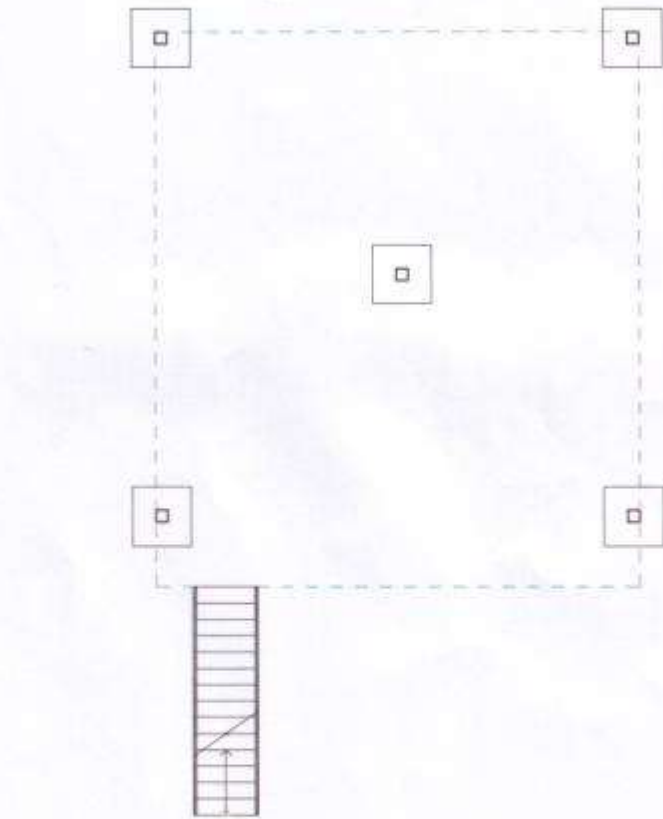
Estructura hormigón armado: zapatas-encadenados-vigas-losas livianas
PLANTAS



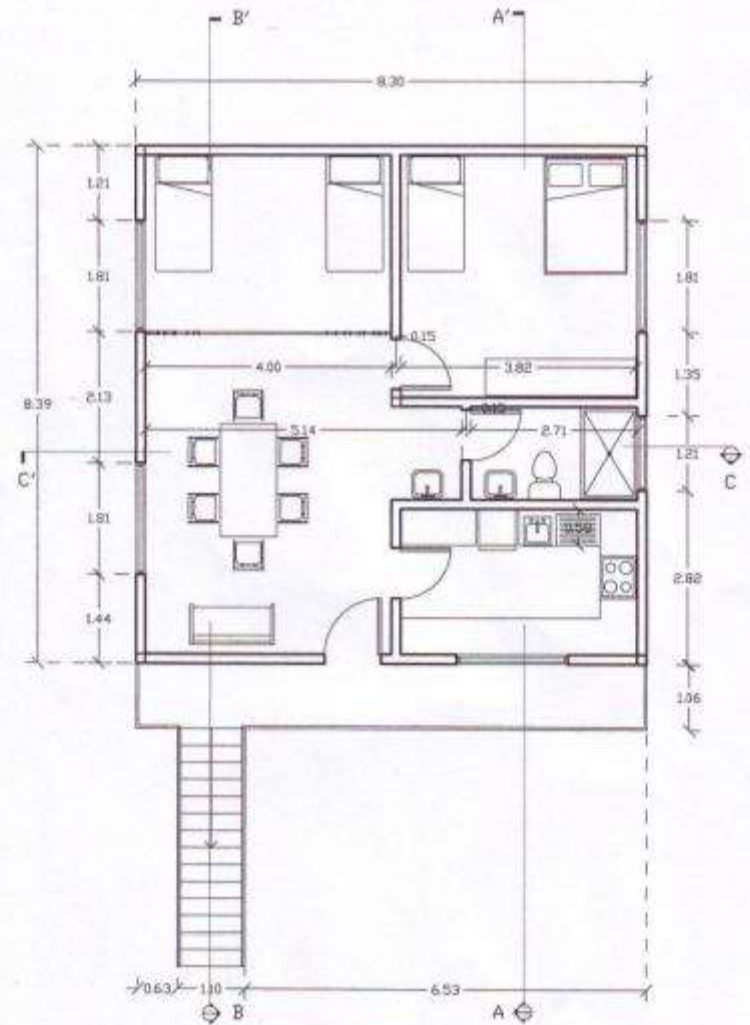
MODULO ESTRUCTURAL BASICO

CORTES



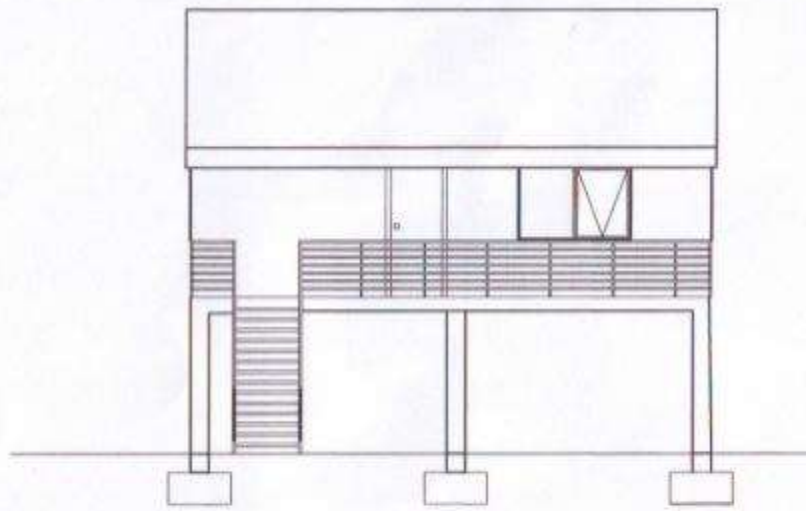


Cimiento

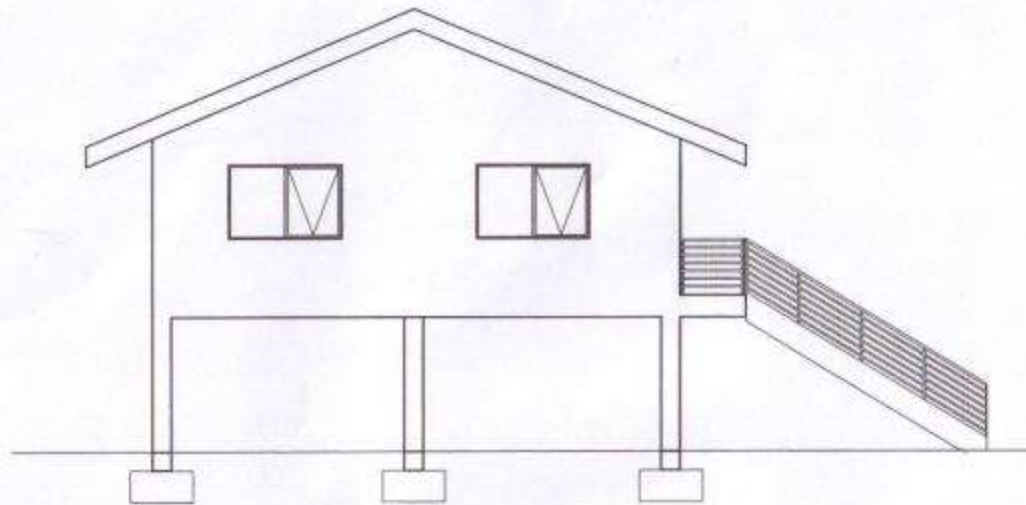


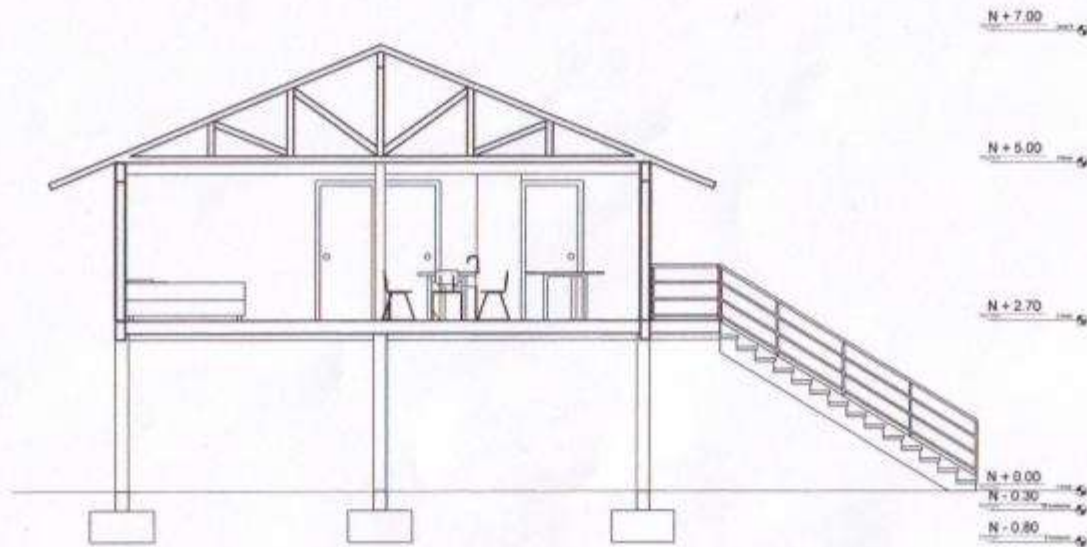
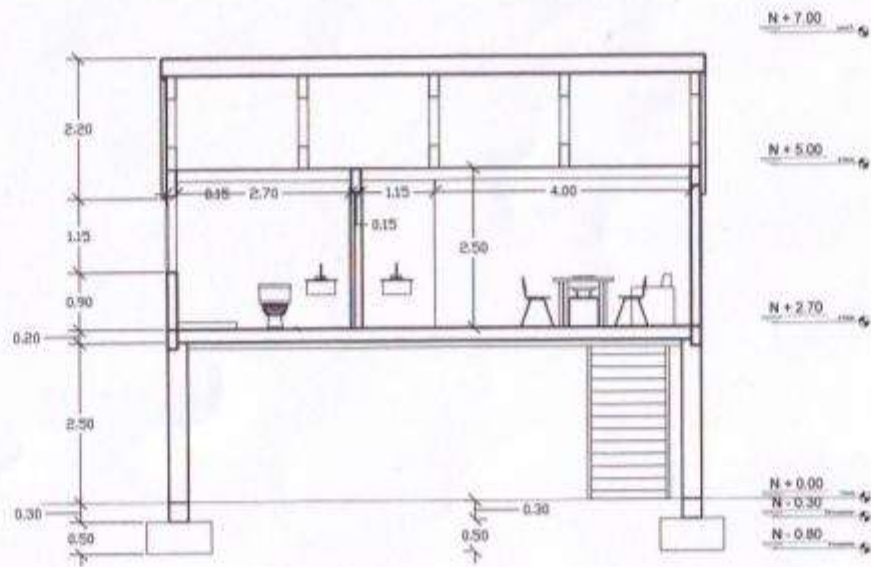
Planta

PROYECTO VIVIENDA TIPO A-2D PLANTAS

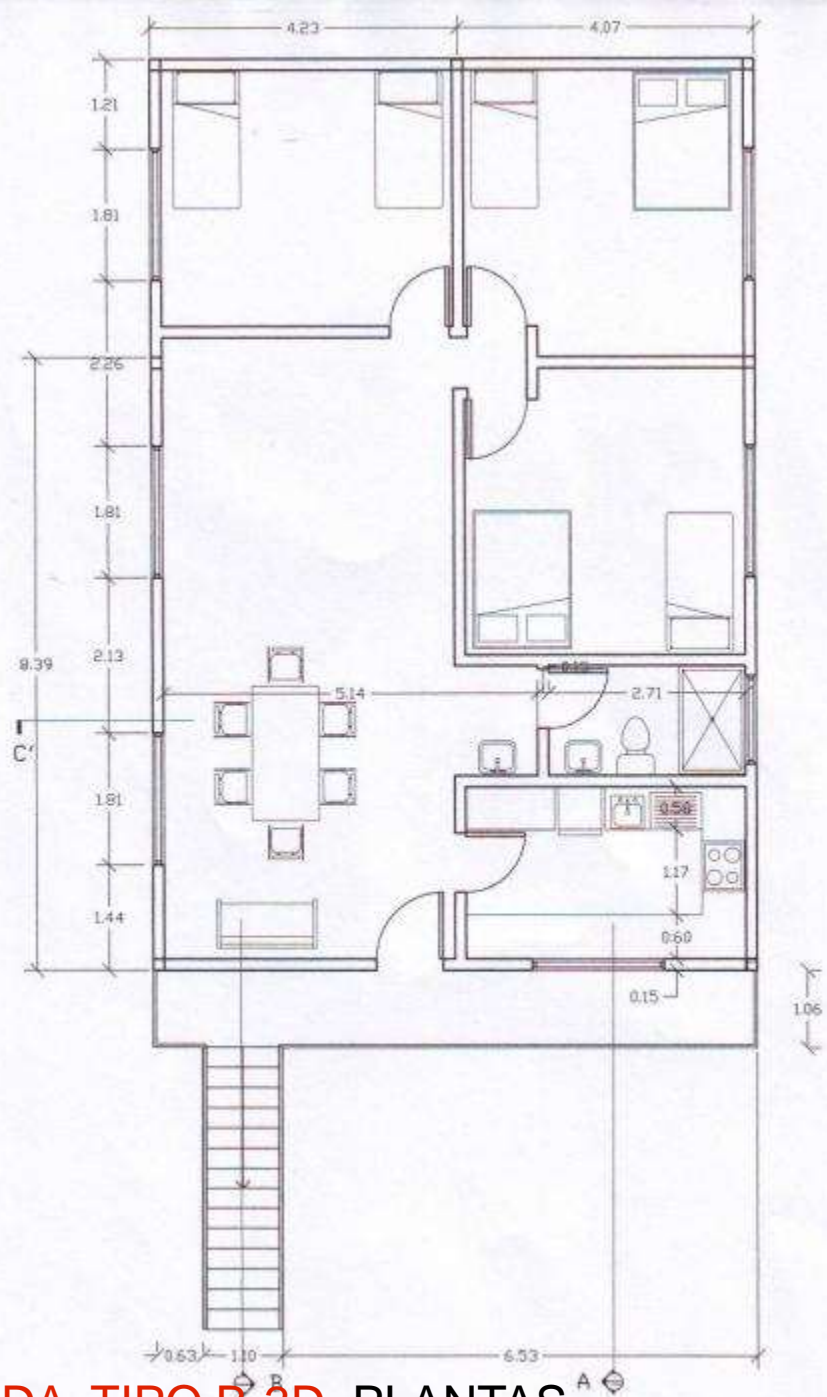


Vista sur





PROYECTO VIVIENDA TIPO A-2D CORTES



PROYECTO VIVIENDA TIPO B-3D PLANTAS